



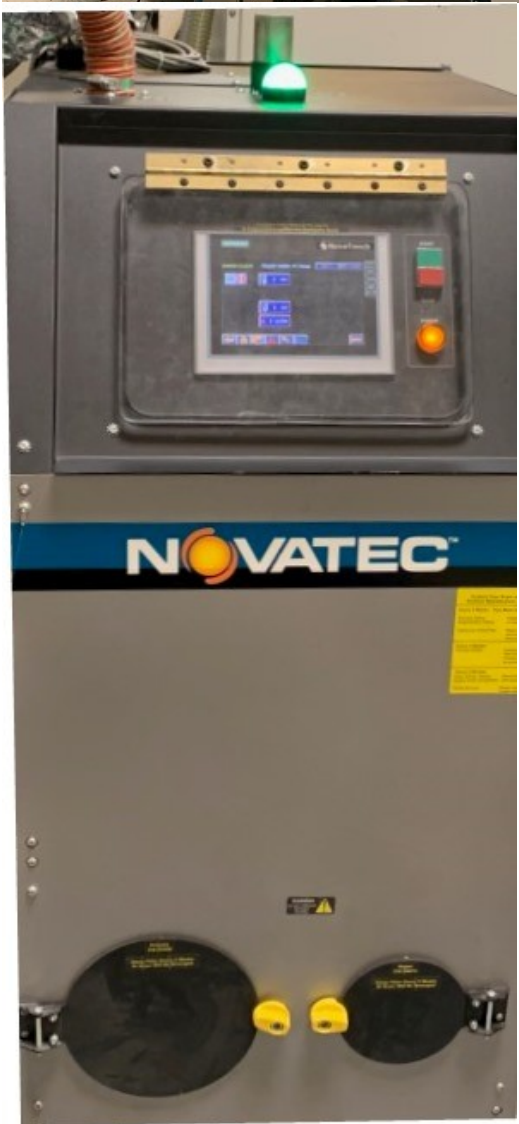
George Goldman
13 Crooked Stick Court
O'Fallon, MO 63366
636-544-5919
ggoldman@streamlineequipment.com

2016 NovaWheel NWB-50-DC+ (50 lbs. per hour) 460 Volts

Dryer/Hopper on Cart with loading of drying hopper and JIT loader for machine

\$10,000 (\$16,150 New)





NovaWheel™ Dry/Convey Series

NWB-DC+

7" Color Touch Screen PLC Control
With Unique Standard Features That Others Call Options!

Portable Dry/Convey Packages With 4" or 7" Color Touch Screen PLC

Throughput: 25-300 lb./hr. (11-136 kg/hr.)

This energy saving NovaWheel™ dryer design includes a 4" or 7" color touch screen PLC that is easier to use than any other dry/convey control. No confusing codes, function buttons or manual lookups. Plus, there are standard dryer features not found on competitive models

Hopper receiver and machine mount receiver included



On all NWB-DC+ models

Standard Features - All Models:

Intelligent Regeneration

Monitors the regeneration process and makes changes, automatically, to minimize the energy used to no more than that required.

Standard Three Phase Detection

Detects phase error and provides alarm.

Auto-Start/Stop Timer

Set for any combination of hours per day and days per week.

Central Vacuum Blower for Conveying

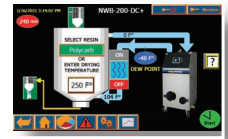
Minimizes maintenance and energy usage.

High Efficiency Stainless Steel Hopper

Fully insulated with full-length sight glass and pellet screen



NWB-50-DC+



Unique Standard Features NWB-DC+ Models

7" Hi-Res Color Touch Screen PLC Control

Intuitive icons guide operator through set-up and monitors all drying parameters.

OverDry Protection

Unique feature that eliminates over-drying of nylons and other sensitive resins.

Intuitive Control With Diagnostics Guide

A trouble shooting guide, complete with photos on the touch screen walk you through operational alarms as well as routine maintenance.

Ethernet Ready Plus SD Card

Smart Ethernet connection with data logging and trending.

Automatic Monitoring and Alarm of Dryer Filter Condition

Operator is alerted with alarm light when process or regeneration filters need to be cleaned or replaced.

Hopper and Dryer Uncouple

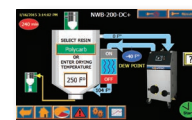
For use as separate units.

No-Charge Standards

- Dew point analyzer with indication and alarm
- Red/green alarm light
- Dry air conveying

Available as NWB-DC through -200:

With 4" Color Touch Screen PLC Control and *Standard Features* shown, plus USB memory stick for data logging and trending.



Additional standard features on all models:

- Separate process and regeneration blowers
- Cooling coil with plasticizer drain for temperatures above 225°F
- Hopper receiver and machine mount receiver
- Vacuum Purge Valve with slide-gate discharge
- 5" Casters for mobility
- -40° Dew point guaranteed
- Process temperatures up to 350°F (177°C) with interlock to heaters
- Open access to all components
- 1.5" Flex Hose(50 ft.) and clamps
- 460/3/60 VAC Standard
- 5-Year Warranty on NWB-DC+
- 2-Year Warranty on NWB-DC



Raising the Bar in Mobile Wheel Dryers

Standard Machine Mount
and Hopper Receivers



Standard Dry Air Conveying Package

Standard Insulated Hopper

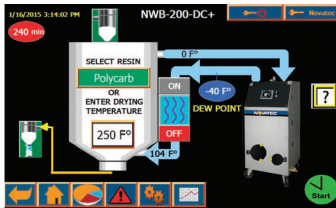
Automatically Adjusts Air Temperature Based on
Monitoring To Regulate temperature In Hopper

Standard LED Alarm Light...
Matsui Charges Over \$250!

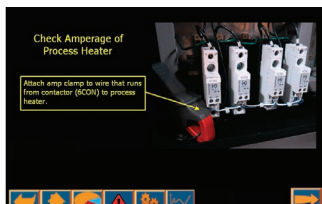
Smart PLC Touch Screen
Makes Setup Easy



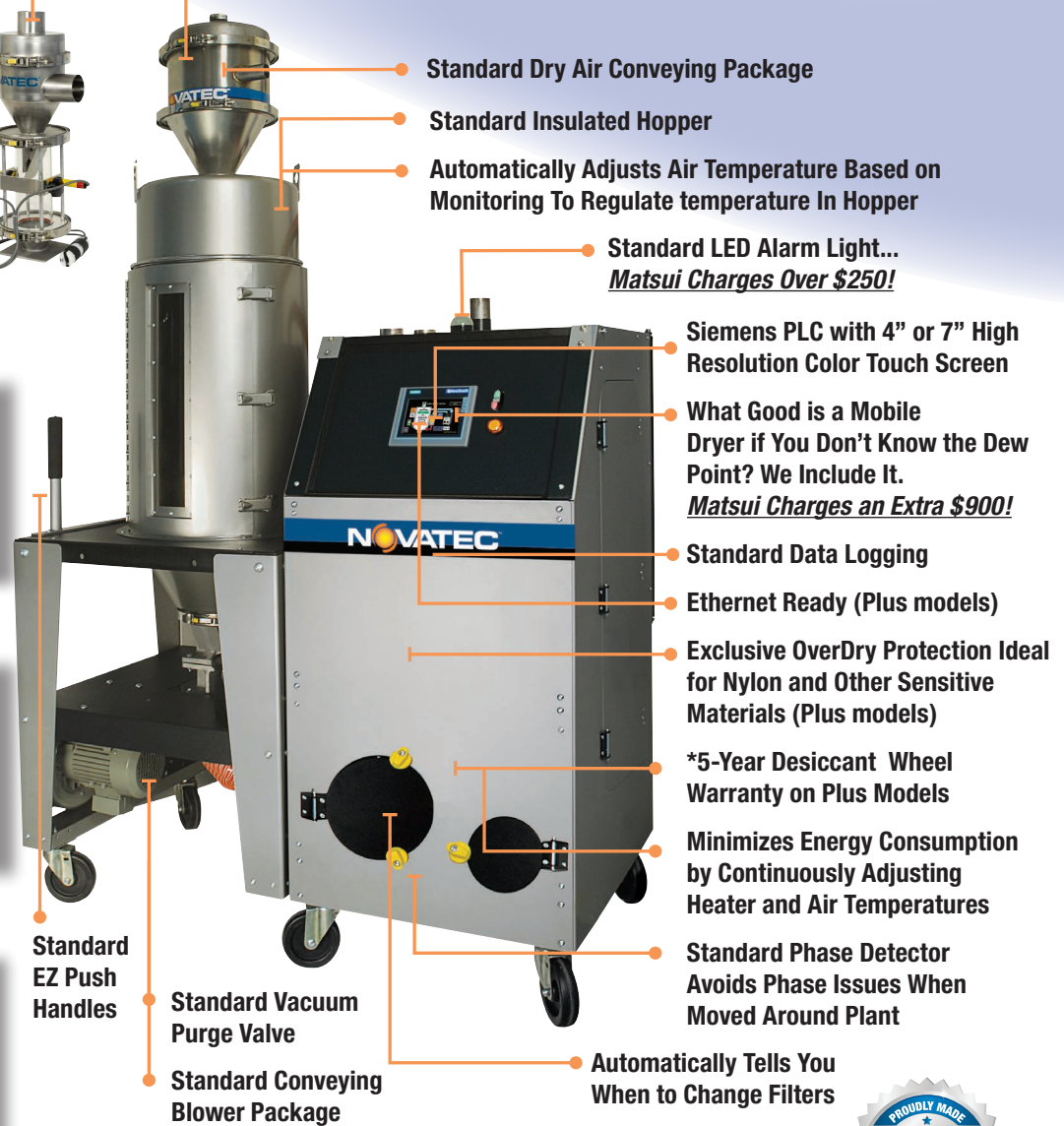
1. Select Resin



2. Start Drying



Pictorially Guides
You to a Solution



*On all NWB-DC+ models

Built-in Standards... Sold as Options Everywhere Else!

- Upgraded Siemens PLC with 4" or 7" High Resolution Display
- Displays Drying Faults and Uses Pictorial Solution Screens
- Automatically Detects and Avoids Over-Drying (Plus models)
- Smart Ethernet Connection with Data Logging (Plus models)

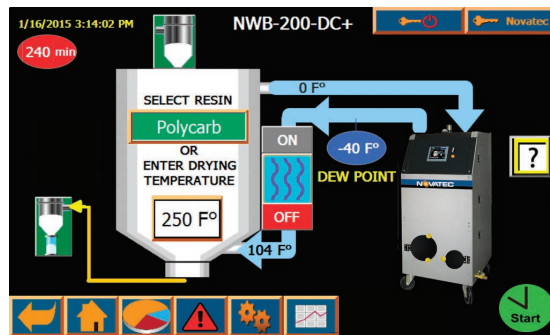
* See warranty for full details.

Siemens Color Touch Screen PLC Control Equals Convenience and Reliability

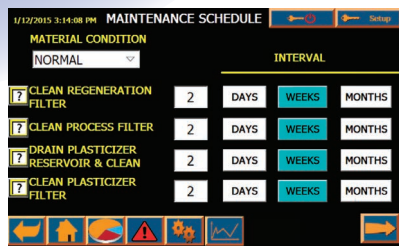
Another NOVATEC FIRST...

- No More Confusing Codes
- No Annoying Function Buttons
- No Manual Look-Ups

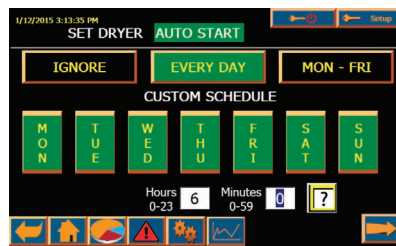
Simply touch any of the intuitive icons to access related screens.



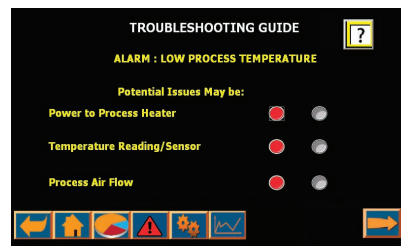
Operation Screen



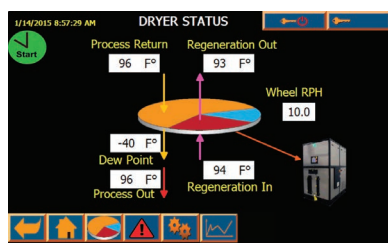
Maintenance Schedule



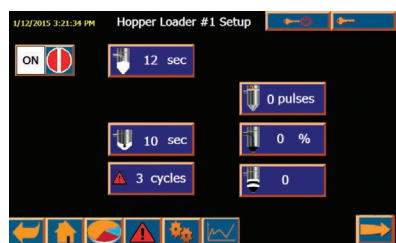
Auto-Start/Stop Menu



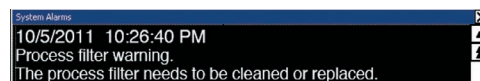
Troubleshooting Guide



Dryer Status Screen



Setup Screens for Hopper and machine Loading



Process and regeneration filter conditions are automatically monitored and displayed.

NovaTouch™ control at no extra charge!

Complete Features	NovaTouch Control
Touch Screen Entry	Standard
Over-dry Protection	Standard
Control Temperature #1	Standard
Over-temperature Alarm and Shutdown	Standard
Hygro Dew Point Sensor	Standard
Real Time Clock	Standard
Seven Day Timer	Standard
Auto Start/Stop	Standard
High/Low Temperature Alarm	Standard
Warning and Error Messages	Standard
Battery Backup	Standard
EEPROM	Standard
Blower Differential Pressure Switch	Standard
Calibration Feature and Set Point Secure	Standard
Set Deviation Limits	Standard
Language Capabilities	Standard
PLC Diagnostics	Standard
*Adjust PID Settings	Standard

Main Features:

- Intuitive Touch Screen for ease of operation
- No confusing alarm codes to look up
- Seven day timer - for auto on/off
- Filter maintenance alerts with oversized filters
- Set points with deviation limits
- Dew point sensor
- Real-time clock with battery backup

*By NOVATEC only

Specifications:

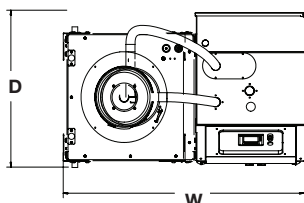
Model Number*	Width		Depth		Height****		Air Connection		Hopper Capacity		Throughput Capacity**			
	in.	cm	in.	cm	in.	cm	in.	cm	lb.	Kg	@460/3/60		@415/3/50	@575/3/60
											lb./hr.	Kg/hr	Kg/hr	Kg/hr
NWB-25-DC+	53	135	32.8	83.0	67.3	171	2	5	55	25	25	11.5	10	11.5
NWB-50-DC+					70.7	179	2	5	110	50	50	22.7	19	22.7
NWB-75-DC+					86.7	220	4	10	165	75	75	34.1	29	34.1
NWB-100-DC+	61.5	156	34	86	79.2	201	4	10	220	100	100	45	38	45
NWB-150-DC+***					92.7	235	4	10	330	150	150	68	57	68
NWB-200-DC+***	70.6	179	37.1	94	93.4	237	4	10	600	272	200	91	74	90
NWB-300-DC+***			51.7	131	106.4	270	4	10	800	363	300	136	110	136

*Specify + after model number for 7" color screen. Delete + for 4" color screen Through -200. **Based on polycarbonate pellets @ 38 lb./ft³

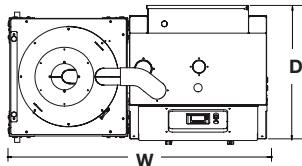
***Casters or hopper extension are packed separately to avoid extra freight charges due to height.

****Add 11" to "H" for VR-5 on NWB-25-DC+ & -50-DC+ **Add 20" to "H" for VR-12 on NWB-75,-200 & -300-DC+ **Add 14" to "H" for VR-12 on NWB-100-DC+ & -150-DC+

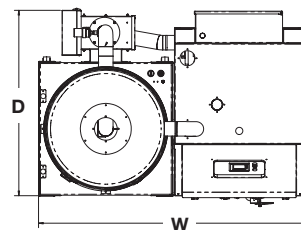
NOTE: Dimensions and throughput are the same for -DC and -DC+ models



NWB-25-DC through NWB-75-DC



NWB-100-DC through NWB-200-DC



NWB-300-DC

Options: (Separate line item on order. See price list #101)

Blowback on Machine Mount Receiver and Hopper Receiver

8 lb. Glass Hopper (In lieu of 2 lb. when ordered with VR-12-MM only)

Alternate voltages: (in lieu of 460V/3ph/60Hz) (415/3/50 No charge). 575 or 460/3/60-CUL

Alternate Voltage: (in lieu of 24 VDC on blowback receivers) (115/1/60 No charge)

Networking Capability for 7" Color Control:

ColorNet™ Networkable Color HMI (Plus models)

Water Saver: Reduces energy usage by ensuring that no more cooling takes place in an external cooling coil than is required (Plus models)

Accessories: (Separate line item on order. See price list #101)

Hopper Extensions for -DC and DC+ models:

25 lb. SS for -25, 70 lb. SS for -50, 110 lb. SS for -100
200 lb. Carbon steel with sight glasses or 200 lb. Stainless steel without sight glasses for -200 and -300

External Proportioning Valve with Coupler: 1.5" or 2.0" O.D.

*****External Process Air Cooling Coil on Stand or on Stand with Plasticizer Trap:** Drying temperatures less than 170°F (77°C) require an external process air cooling coil. Please contact factory for options. (** Applies to -300 models only)

Accessories Included @ No Charge		
Model	Machine Mount Receiver Capacity	Hopper Receiver Capacity
-25, -50	5 lb./2.3 kg	5 lb./2.3 kg
-75	5 lb./2.3 kg	12 lb./5.5 kg
-100, -150, -200, -300	12 lb./5.5 kg	12 lb./5.5 kg
Flex Hose, Clamps and Pickup Wand Included		



13 Crooked Stick Court
O'Fallon, MO 63366
636-544-5919

ggoldman@streamlineequipment.com

Used Equipment Terms and Conditions

Used Equipment terms: Full payment to be received upon purchase. Customer is responsible for all rigging and freight charges unless otherwise stated. All used equipment is shipped freight collect. We strongly recommend that customer specify freight carrier.

Conditions: There are no warranties expressed or implied by Streamline Equipment, LLC, as to compliance with any particular requirements of Federal, State, or Local laws and Industrial Codes including, without limitation, The Occupational Safety and Health Act of 1970 (and all amendments thereto), and The American National Standards Institute's Code B-151.1 of 1976 (and all amendments thereto). It is the buyer's duty to inspect all machinery and to confirm all information. Further to provide proper safety devices and equipment or means that may be necessary to safeguard the operator from harm, and to safeguard each machine and equipment to meet all government standards, including The Occupational Safety and Health Act of 1970, and The American National Standards Institute's Code B-151.1 of 1976 and later orders. This information is obtainable from The Society of Plastics Industry, 1801 K Street NW, Suite 600K, Washington, DC 20006 USA; Phone: +1-202-974-5200.

All goods are sold in "as is" condition and with all faults and no description of the goods contained herein shall operate as any type of warranty or representation. Except as otherwise previously and expressly stated: **Streamline Equipment, LLC, makes no representation or warranty of any kind, expressed or implied, as to the merchantability, fitness for a particular purpose, or any other matter with respect to the goods**, whether used alone or in combination with any other substances, materials, or goods. Buyer hereby acknowledges that Buyer has had sufficient opportunity to inspect the goods and is not relying on any expertise or representation of Streamline Equipment, LLC or its agents, either with respect to the character or quality of the goods or with respect to the use of the goods. Buyer expressly assumes all risk of injury or damage to Buyer, Buyer's property, and Buyer's employees and agents and all responsibility therefore, which may arise out of the possession, handling, use, or operation by Buyer, Buyer's employees or Buyer's agents for any purpose whatsoever. Furthermore, Buyer hereby agrees to indemnify and hold harmless Streamline Equipment, LLC or its employees and agents against and from any and all liabilities, causes of action, damages, claims, penalties, and cost and expenses related thereto, including all cost of defense and settlement and reasonable attorney's fees, arising from or growing out of any possession, handling, operation, or use of goods for and after the date of delivery of the goods to Buyer, and Buyer further agrees, upon Streamline Equipment, LLC request to defend any cause of action suite or claim which may be brought against Streamline Equipment, LLC, relating to any subsequent handling, operation or use of goods.



13 Crooked Stick Court
O'Fallon, MO 63366
636-544-5919

ggoldman@streamlineequipment.com

Used Machinery Warranty: It is strongly recommended, that all proposed equipment be inspected and specifications verified by the buyer prior to sale. The buyer purchases above machinery "as is, where is, and with all faults", having no implied or expressed warranty that the machinery be merchantable or fit for any particular purpose, and no warranty which extends beyond the description on this quotation. Should any literature be obtained from Streamline Equipment, LLC, such literature does not mean or warrant or imply that Streamline Equipment, LLC, represents or has verified its accuracy. Any literature is to only be used as a guide and the Streamline Equipment, LLC, cannot guarantee its accuracy.

Taxes: Quotations and price lists do not include provision for taxes, duties, tariffs, brokerage, or items of a similar nature of any kind.

Limitation: Streamline Equipment, LLC, shall not be liable for failure to perform any obligation with respect to Buyer resulting directly or indirectly from or contributed to by the acts of God; acts of Buyer; civil or military authority; fires; strikes or other labor disputes; accidents; floods; epidemics; war; riots; delays in transportation; inability to obtain raw materials, components, labor, fuel or supplies; or any other circumstance beyond sellers' reasonable control whether similar or dissimilar to the foregoing. Abuse, misuse, or failure to follow operating and maintenance procedures will void warranty. Streamline Equipment, LLC, shall not be liable under any circumstances for any special, indirect, or consequential damages arising from defective equipment. No implied statutory warranty of merchantability or fitness for a particular purpose shall apply. No other warranty of any nature is expressed or implied.

Notes: (1) All equipment offered subject to prior sale and for acceptance within 30 days from date of quotation. (2) Prices subject to change without notice. (3) Payments are to be made in U.S. funds. (4) Specifications and terms are subject to change without notice (5) Orders are not subject to cancellation except by written, mutual consent.